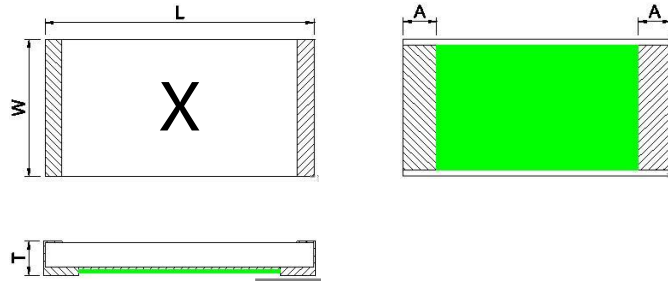


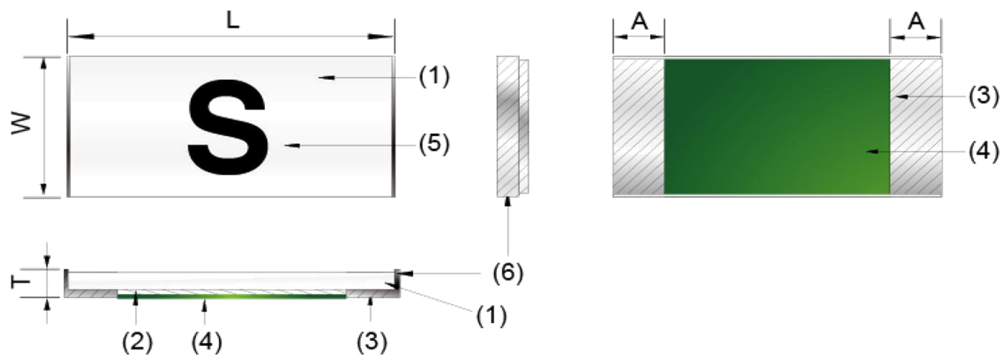
3. 产品尺寸和结构 / SIZE AND STRUCTURE

3-1 尺寸 (单位: mm) / SIZE (Unit: mm)



型号 / Type number	W	L	T	A
LM0603TD****A***V	0.81±0.15	1.60±0.15	0.48±0.08	0.35±0.20

3-2 产品结构及使用材料说明 / STRUCTURE & MATERIAL



编号 No	元件 Component	材质 Material	数量 Quantity
①	基板 Substrate	氧化铝陶瓷 Alumina Ceramic	1
②	涂层 Coating	玻璃浆 Glass cover	1
③	熔丝本体 Fuse element	银 Silver	1
④	保护防焊层 Protective coating	防火级环氧树脂 Flame-retardant epoxy	1
⑤	文印防焊层 Marking coating	防火级环氧树脂 Flame-retardant epoxy	1
⑥	端头 End Termination	镀银 Silver plated	2

4. 基本信息/ ORDERING INFORMATION

Part No. 料号	Rated Voltage 额定电压 (DC)	Rated Current 额定电流(A)	Breaking Capacity(A) 分断能力	Typical Cold Resistance (mOhms) ² 标准冷电阻	Typical Pre-Arcing I ² t(A ² Sec) 熔化热值	Marking 标记
0603TD250mA	24V/32V/48V/63V	250mA	50A@24Vdc 50A@32Vdc 50A@48Vdc 50A@63Vdc	2300	0.0006	D
0603TD500mA		500mA		580	0.003	F
0603TD630mA		630mA		-	-	-
0603TD750mA		750mA		400	0.02	G
0603TD1A		1A		250	0.011	B
0603TD1.25A		1.25A		204	0.063	J
0603TD1.5A		1.5A		150	0.045	H
0603TD2A		2A		78	0.115	K
0603TD2.5A		2.5A		49	0.14	L
0603TD3A		3A		35	0.28	O
0603TD3.5A		3.5A		28	0.5	R
0603TD4A		4A		18	0.6	S
0603TD5A		5A		14	1.9	T
0603TD6A		6A		11	2.3	V
0603TD7A		7A		9.5	3	X
0603TD8A		8A		7	4.5	Z

说明/Notes :

a. “一般电阻值”是在通以小于额定电流的 10%的弱电流条件下量测的阻抗.

Nominal Resistance measured with <10% rated current ;

b. “一般 I²t ”是指自通电至作动时间为 8ms 的过程所对应的 I²t.

Nominal Melting I²t measured at 8 m sec opening time ;

c. 标准冷电阻公差范围+/-25%.

Standard cold resistance tolerance range +/-25% ;

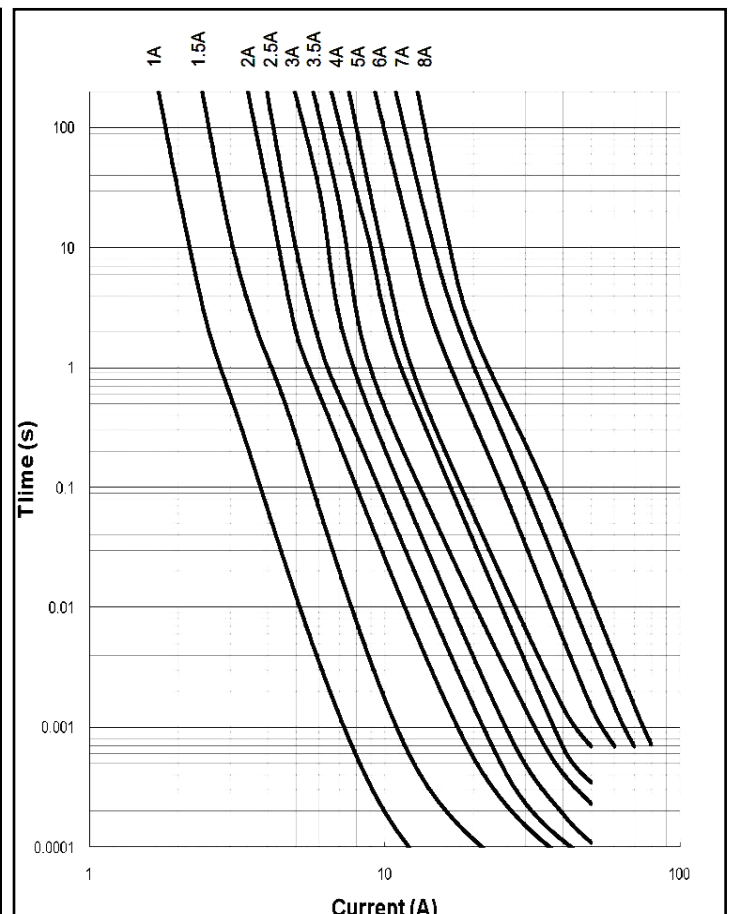
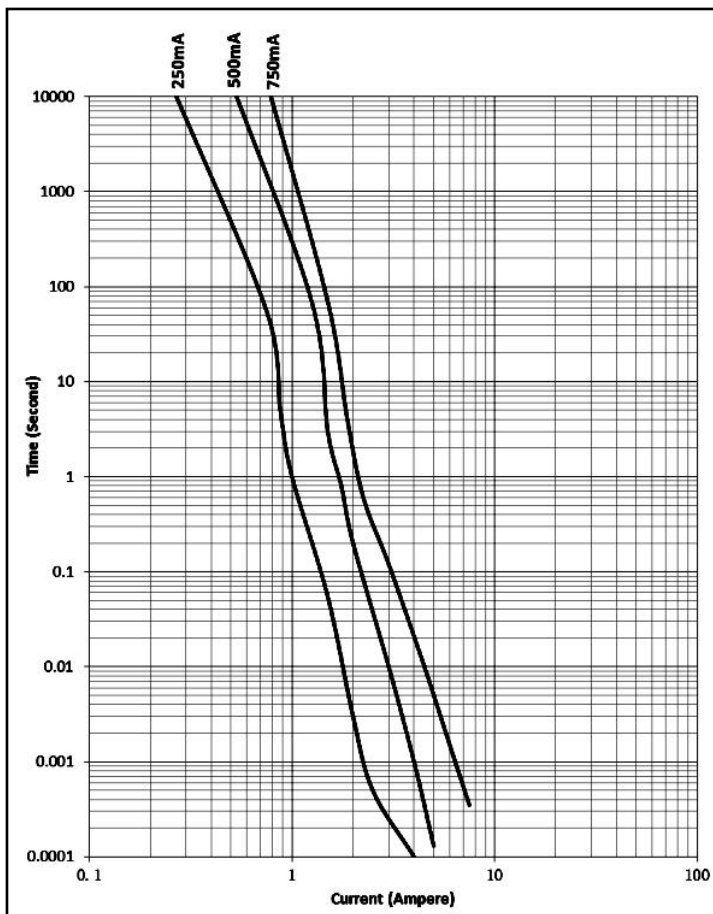
5. 电气特性 / ELECTRICAL CHARACTERISTICS

5-1 时间-电流特性 / Pre-Arcing Time-Current Characteristics (limits)

RATED CURRENT	1 IN/倍	2.0 IN/倍	2.5 IN/倍
250mA to 8A	Min.	Max.	Max.
	4hrs	60s	5s

In : 25°C下额定电流 / Rating Current at 25°C

时间-电流特性曲线 / Time-Current Curve:



5-2 分断能力 / Breaking Capacity

额定电流 RATED CURRENT	分断能力 BREAKING APACITY
250mA to 8A	50A@24Vdc 50A@32Vdc 50A@48Vdc 50A@63Vdc

4. 产品特性及信赖性测试规范/PRODUCT CHARACTERISTICS AND RELIABILITY TEST STANDARD

序号 No.	项目 Item	内容 Content	判定标准 Criteria
1	时间/电流特性 Time/current characteristics	分别通以1、2、2.5、3、3.5、10In、 电流得出相对应的时间 I=1、2、2.5、3、3.5、10In and measure the value of time individually by meter ,	各电流条件下的时间参数符合规定值 Value of time measured in different currents is within spec. UL248-1/-14
2	分断能力测试 Breaking capacity	V = 32 V DC /63V DC ;I=50/300A	没有持续电弧、燃烧、爆炸现象 No a permanent arcing, ignition, bursting UL248-1/-14
3	可焊性 Solder ability	熔锡温度245°C±5°C, 浸锡时间 5s±0.5s, 浸入深度从基座面起 2.0mm±0.5mm, 放在20X的放大 镜下 Cover ≥95%检查T=245°C ±5°C, t=5s±0.5s, magnifier : 20X	锡覆盖率≥95% MIL-STD-202 Method 208
4	抗焊性测试 Soldering heat resistance	熔锡温度/ T =250°C±5°C, 浸锡时间 / t =30±5s T=250±5°C, t=30±5s	外观无裂纹和损伤, 前后阻值偏差小于或 等于±15%; 文印清晰可辨 No crack and damage, ΔR<15% Marking is easily legible MIL-STD-202, Method 210F, Condition K
5	冷热冲击 Thermal Shock	-65°C,放置时间为15min,→ 25°C, ,放置时间为5min→ 125°C放置时间15min 循环次数为100个 -65°C 15min~25°C 5min~ +125°C 15min ; 100 cycles	外观无裂纹和损伤, 前后阻值偏差<±10% No crack and damage, ΔR<10% MIL-STD-202, Method 107G conditionB-3
6	机械冲击 Mechanical Shock	峰值100 G,持续时间11ms,波形: 半正弦, 五次脉冲 a=100G for 11ms, 5pulses	外观无裂纹和损伤, 前后阻值偏差<± 10%。 No crack and damage, ΔR<10% MIL-STD-202, Method 213B
7	振动测试 Vibration	承受振幅为0.03 英寸(全程最大0.06 英寸),频率在大约10Hz到55Hz 的范 围均匀地变化的简谐运动。)	MIL-STD-202, Method 201A
8	高频振动测试 Vibration, High Frequency	20g's峰值, 公差值为±10%, 振动 频率10Hz-2000Hz, 总计时间为 12h	MIL-STD-202, Method 204D, Condition D

7. 环境特性 / ENVIRONMENTAL CHARACTERISTIC

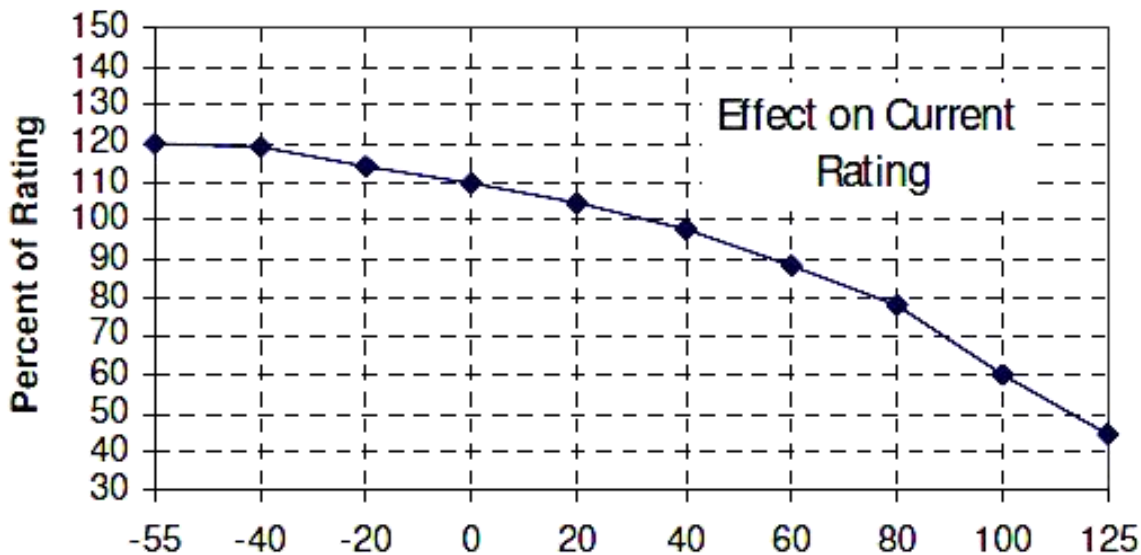
7-1 操作温度范围: $-55^{\circ}\text{C} \sim 125^{\circ}\text{C}$ / Operating Temperature: $-55^{\circ}\text{C} \sim 125^{\circ}\text{C}$

若贵司操作环境温度超出 $23 \pm 3^{\circ}\text{C}$ 范围, 在选用保险丝规格时, 需考虑操作环境温度对保险丝的影响。请参照: 温度-电流曲线图。

When choosing the fuse's specification, if the operating environmental temperature beyond the scope from $20 \sim 26^{\circ}\text{C}$, you should consider the environmental temperature's affection to fuses.

please refer:

Temperature-Current curve:



7-2 存储条件 / Storage

在温度 $10^{\circ}\text{C} \sim 40^{\circ}\text{C}$ 、相对湿度 $\leq 75\%$ 的密闭条件下可存放2 年。

Under airtight in temperature $10^{\circ}\text{C} \sim 40^{\circ}\text{C}$ 、relative humidity $\leq 75\%$ can store 2 years.

在温度 $10^{\circ}\text{C} \sim 40^{\circ}\text{C}$ 、相对湿度为95%的非露天下最多可存放30 天。

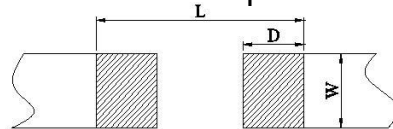
Without dew in temperature $10^{\circ}\text{C} \sim 40^{\circ}\text{C}$ 、relative humidity be 95% maximum value for 30days.

8. 焊垫尺寸及焊接条件 / SOLDER PAD SIZE AND WELDING CONDITIONS

8-1 焊垫尺寸建议 / Recommended Size of the Pad.

L	W	D	t
1.50mm	0.90mm	0.50mm	$\geq 35\mu\text{m}$

t : 元件焊垫金属层厚度 (min.) / t : Thickness of pad metal (min.)



8-2 焊接参数建议 / Recommended Customer Soldering Parameters

温度曲线 Temperature Condition

预热段 : $145 \pm 15^\circ\text{C}$, max. 120 sec.

Preheating : $145 \pm 15^\circ\text{C}$, max. 120 sec.

焊锡段 : min. 220°C , max. 60 sec.

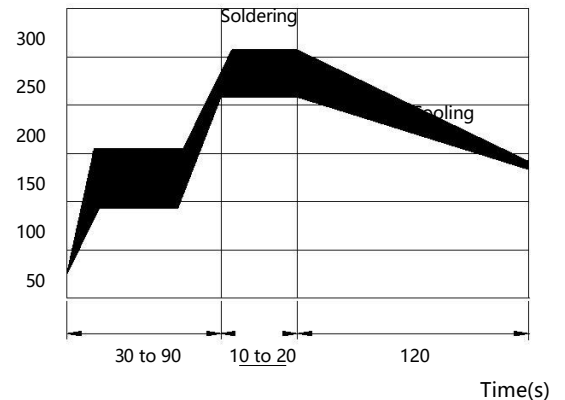
Soldering: min. 220°C , max. 60 sec.

允许最高温度 : $260 \pm 5^\circ\text{C}$, max. 10sec.

Maximum temperature : $260 \pm 5^\circ\text{C}$, max. 10sec.

允许烙铁焊接条件(热风设备) : 350°C , 3~5seconds

Rework Temperature (hot air equipment) : 350°C , 3~5seconds



8-3 焊接方法建议 / Recommended Reflow Methods

焊接热源方式可用红外线, 热蒸气, 热风

IR, vapor phase oven, hot air oven.

如果焊锡温度超过允许最高温度, 则产品本身会有功能损坏的疑虑

If reflow temperatures exceed the recommended profile, devices may not meet the performance requirements.

7. 批量生产出货测试项目 / LOT ACCEPTANCE TEST REQUIREMENTS

7-1 外观 / Visual

方法：利用放大镜进行检查

Procedure: Visual

标准：不能有脏污、不洁、文印错误、破损等

Acceptance Criteria: No parts are outstandingly stained.

7-2 尺寸 / Dimensions

方法：使用合适且经校正的标尺

Procedure: As appropriate, calipers, micrometers, optical comparator, or approved gages.

标准：尺寸均在规定标准范围内

Acceptance Criteria: No parts outside specific dimensions.

7-3 时间-电流特性 / Time-Current Characteristics

方法：测试电流 $I=1.0I_n;2.0I_n;2.5I_n;3I_n;3.5I_n;10I_n$,量测出个别电流下的对应时间

Procedure : $I=1.0I_n;2.0I_n;2.5I_n;3I_n;3.5I_n;10I_n$ and measure the value of time individually by meter at 25°C

标准：对应时间值均在规定标准范围内/Acceptance Criteria: All parts must within the specific .

7-4 分断能力 / Breaking Capacity

方法：测试电压\电流为 $V = 72V/63V/32V/24V$ DC ; $I=50A/150A/300A$, 利用此条件冲击元件

Procedure: $V = 72V/63V/32V/24V$ DC ; $I=50A/150A/300A$

标准：元件不发生持续电弧燃烧及爆裂

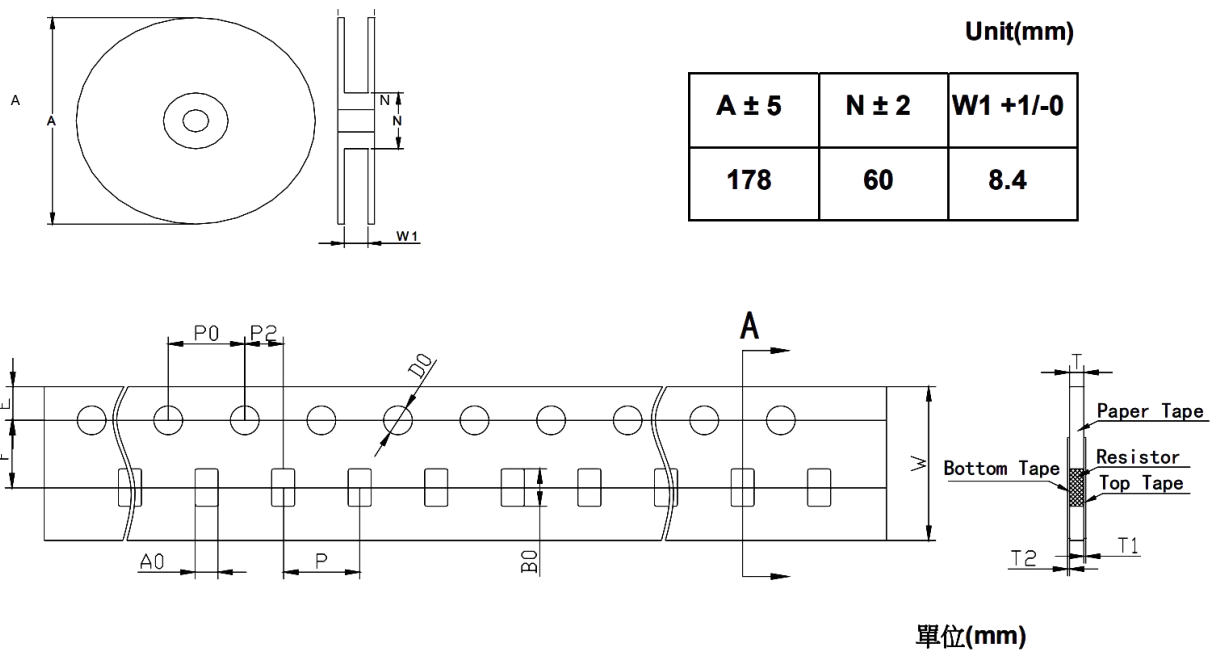
Acceptance Criteria: No permanent arcing, ignition, bursting

11. 包装讯息 / PACKING INFORMATION

11-1 包装数量、重量 / QUANTITY & WEIGHT

编码 Part Number	数量 (pcs) Quantity(pcs)	重量(g) Weight(g)
0603 TD * A *v	5,000	140±20

11-2 卷轮规格 / Reel & Tape specifications



W	8.00 ± 0.30	D0	1.50 ± 0.10
P0	4.00 ± 0.10	F	3.50 ± 0.10
P	4.00 ± 0.10	E	1.75 ± 0.10
P2	2.00 ± 0.10	T	0.80 ± 0.10
A0	1.20± 0.15	T1	max.01
B0	1.95± 0.15	T2	max.01

11-3 密封胶膜剥离强度要求 / Peeling Strength of Seal Tape

F = 剥离强度 : 0.3 – 1.0N (30 - 100gf)

F = Peeling Strength: 0.3 – 1.0N (30 - 100gf)

