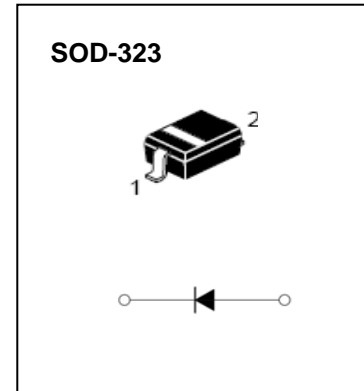


### FEATURES

- Fast Switching Speed.
- Surface Mount Package Ideally Suited For Automatic Insertion
- For General Purpose Switching Applications
- High Conductance

### APPLICATIONS

- Surface mount fast switching diode



### ORDERING INFORMATION

- Package:SOD-323
- Quantity Per Reel:3,000pcs
- Device Marking:T3

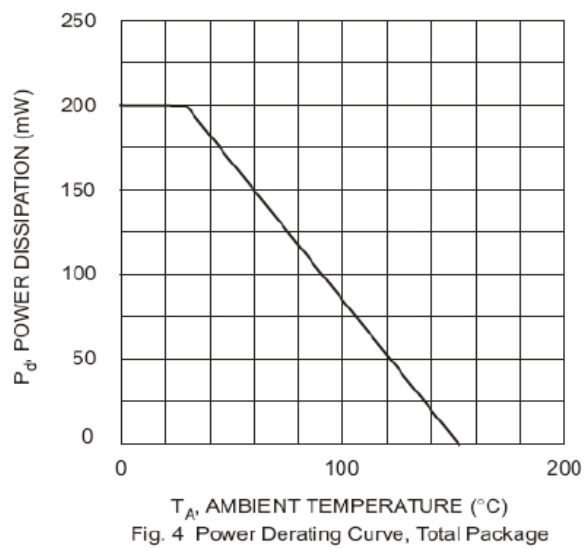
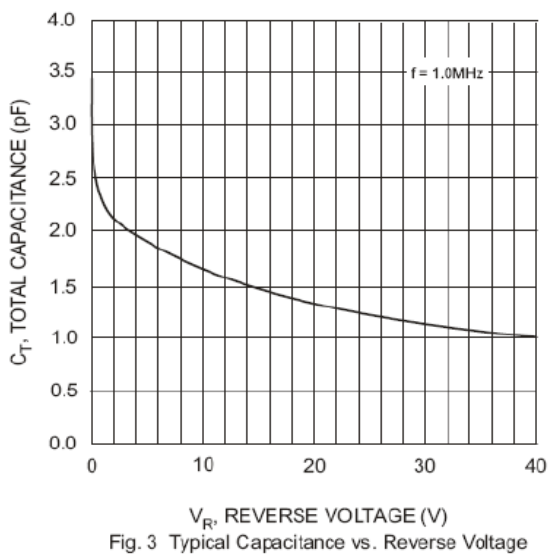
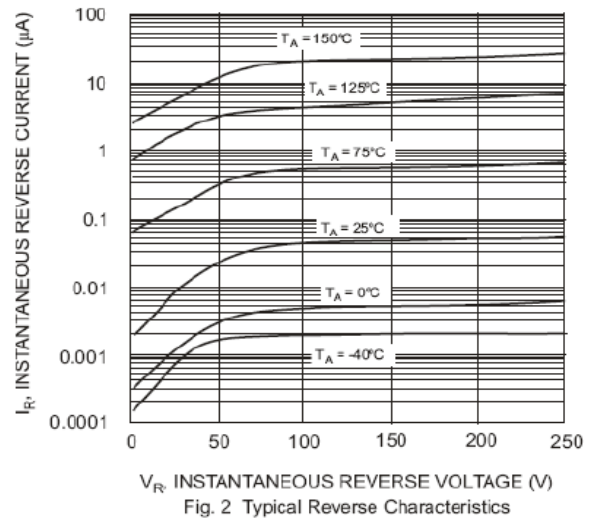
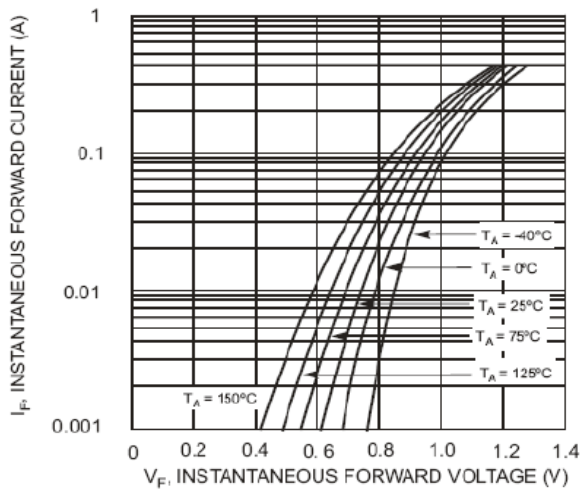
### MAXIMUM RATING @ Ta=25°C unless otherwise specified

Characteristic	Symbol	BAS21H	Unit
Repetitive Peak Reverse Voltage	$V_{RRM}$	250	V
Working Peak Reverse Voltage	$V_{RWM}$	200	V
DC Reverse Voltage	$V_R$		V
RMS Reverse Voltage	$V_{R(RMS)}$	141	V
Forward Continuous Current	$I_{FM}$	400	mA
Average Rectified Output Current	$I_o$	200	mA
Non-Repetitive Peak Forward Surge Current	$I_{FSM}$	2.5	
@t=1.0 $\mu$ s		0.5	
@t=1.0 s			
Repetitive Peak Forward Surge Current	$I_{FRM}$	625	mA
Power Dissipation	$P_d$	200	mW
Thermal Resistance Junction to Ambient Air	$R_{\theta JA}$	625	°C/W
Operating and Storage Temperature Range	$T_j, T_{STG}$	-65 to+150	°C

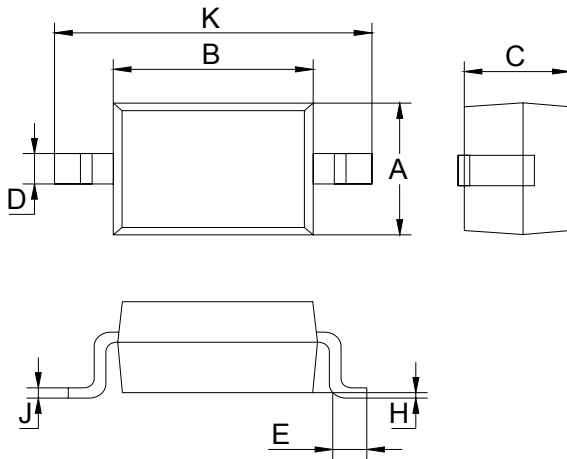
ELECTRICAL CHARACTERISTICS @ Ta=25°C unless otherwise specified

Characteristic	Symbol	Min	Max	Unit	Test Condition
Forward Voltage	$V_{FM}$	-	1.0 1.25	V	$I_F=100mA$ $I_F=200mA$
Reverse Current	$I_R$	-	0.1	$\mu A$	$V_R=200V$
Capacitance between terminals	$C_T$	-	5	pF	$V_R=0, f=1.0MHz$
Reverse Recovery Time	$t_{rr}$	-	50	ns	$I_F=I_R=30mA,$ $t_{rr}=0.1 \times I_R, R_L=100\Omega$

TYPICAL CHARACTERISTICS @ Ta=25°C unless otherwise specified

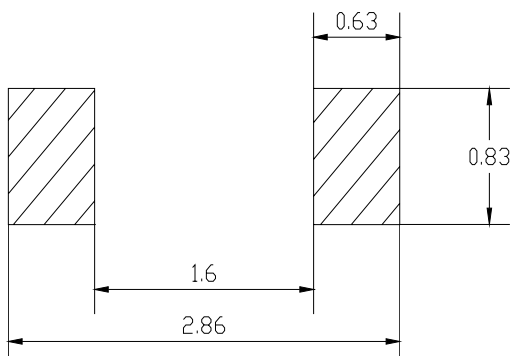


### SOD-323 Package Outline Dimensions



SOD-323		
Dim	Min	Max
A	1.275	1.325
B	1.675	1.725
C	0.9 Typical	
D	0.25	0.35
E	0.27	0.37
H	0.02	0.1
J	0.1 Typical	
K	2.6	2.7
All Dimensions in mm		

### SOD-323 Suggested Pad Layout



Unit : mm